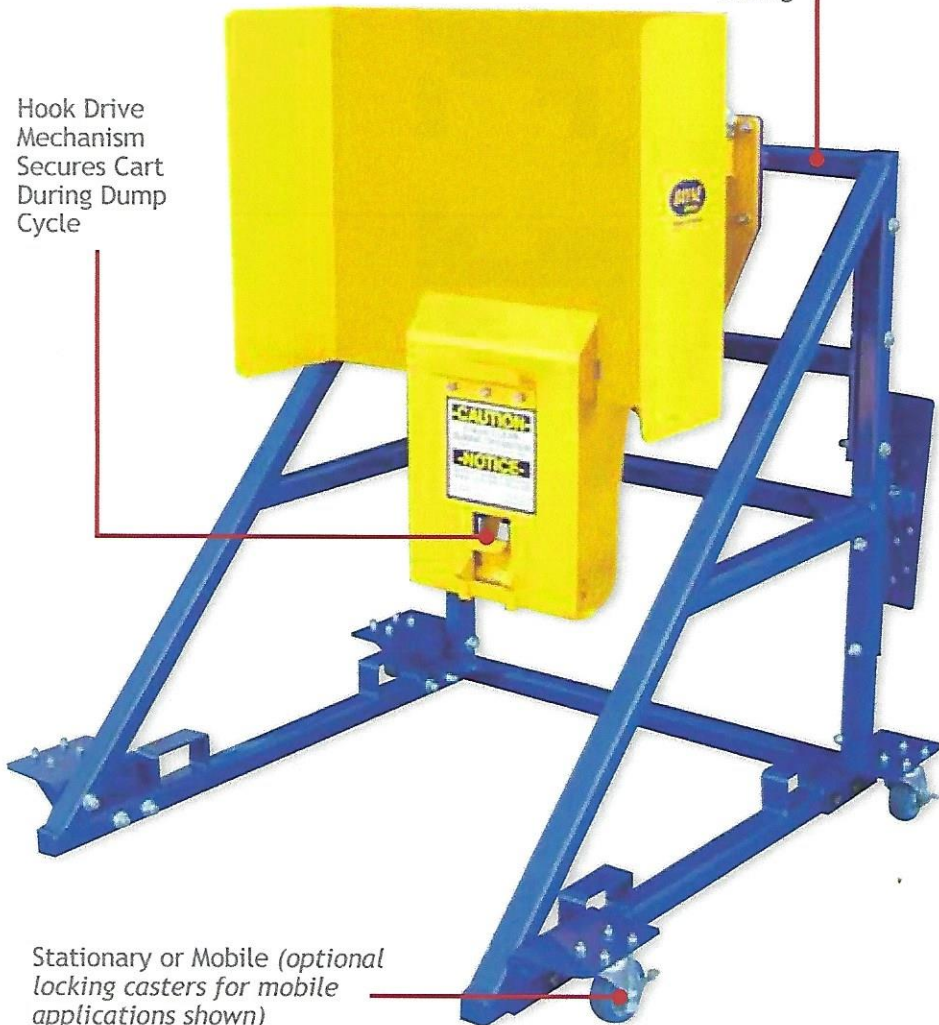


# **BEST** — Bayne Engineered Solutions Team **C/I Taskmaster Series**

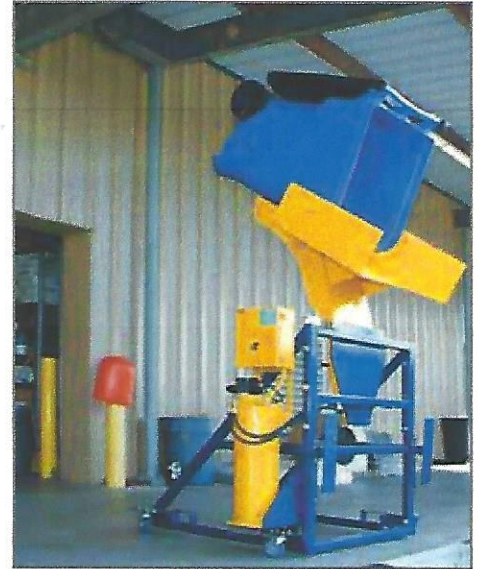
dynamic  
cost-effective  
**Strong**

Strong 1/4" Wall  
Structural Steel  
Tubing

Hook Drive  
Mechanism  
Secures Cart  
During Dump  
Cycle



Stationary or Mobile (*optional locking casters for mobile applications shown*)



## Specifications:

- 41-61" Dump-over Heights
- Up to 500 lbs. Lift Capacity
- 6-8 Second Cycle Time
- 1800 psi Working Pressure
- 40° Dump Angle



Easy to Use Pendant Control  
(standard on all C/I Taskmaster Series)

# Taskmaster™

Compatible with standard domestic style 2-bar roll-out carts

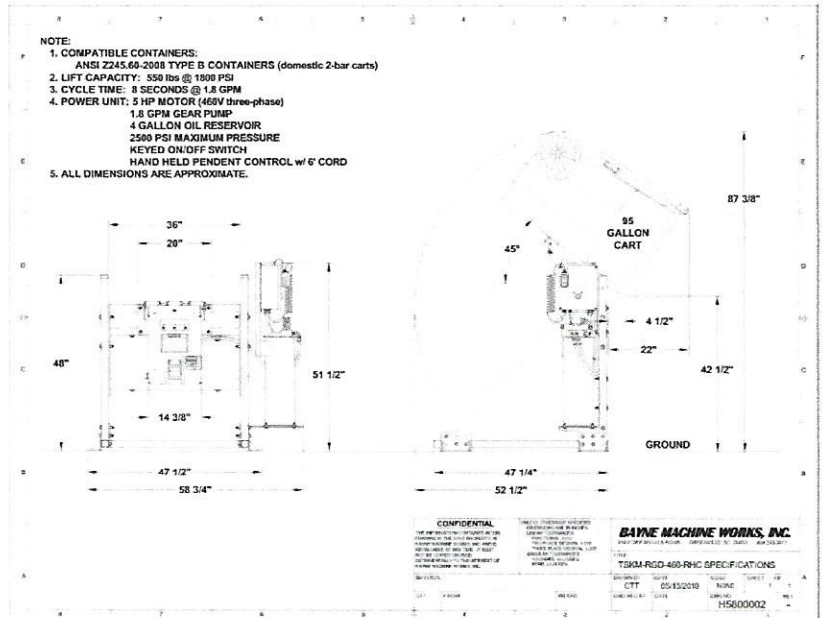
42-1/2" Dump Over Height

87-3/8" Overhead Height

45° Dump Angle

550 lbs Lift Capacity

8 Second Cycle Time



# Hi-Lift

Compatible with standard domestic style 2-bar roll-out carts

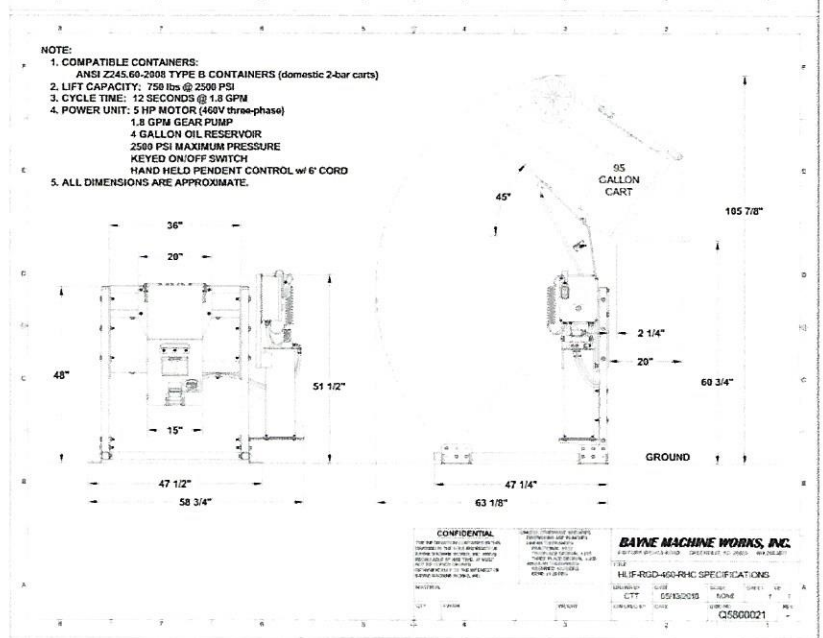
60-3/4" Dump Over Height

105-7/8" Overhead Height

45° Dump Angle

750 lbs Lift Capacity

12 Second Cycle Time



# Super Hi-Lift

Compatible with standard domestic style 2-bar roll-out carts and Ameri-Kart® 1/2 yd & 1 yd Material Handling Carts

57" Dump Over Height

137-7/8" Overhead Height

40° Dump Angle

1000 lbs Lift Capacity

12 Second Cycle Time

