

## High Volume *Transfer Systems*



BlokPak 3000®



M-Series 1475XW compactor

### Features

- ▼ Process up to 90 tons of material per hour
- ▼ Compact materials directly into transfer trailer
- ▼ Multiple options available to suit your application

### The Worldwide Compaction Leader

Marathon® Equipment is known throughout the world as one of the leading manufacturers of quality on-site waste compaction products. The RamJet® brand has been the industry standard for quality and innovation for more than 50 years, and includes stationary, self-contained, apartment, and high-rise compactors, compaction containers, pre-crushers, auger-style compactors, transfer systems, and a wide array of options for virtually any application.

The RamJet logo consists of the word "RAMJET" in bold, black, sans-serif capital letters, followed by a stylized blue graphic of a ram's head in profile.

# TRANSFER STATIONS



## BlokPak 3000 *Transfer Systems*

Perfect for:



Transfer Stations



Municipalities



Convenience Centers



Recycling Centers



Long-Distance Highway & Rail Systems

### BlokPak 3000 Features

The BlokPak 3000® is the largest Marathon transfer system compactor. It compacts waste against a vertical gate, forming a 10' (3 meter) log in the compaction chamber. Each log is then ejected into the transfer trailer, and the process is continued until maximum payload is achieved. When the trailer is full, the BlokPak 3000 can continue to be fed while changing trailers, saving valuable time. This unique design eliminates the need for expensive ejection type trailers.



### High Capacity Transfer Stations

Marathon offers transfer system compactors that process up to 90 tons per hour.

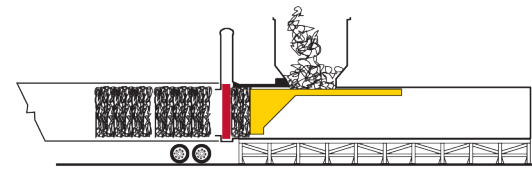
Specifications		
Structure Size (L x W x H)	53' 7" x 11' 7" x 17' 4 1/2"	17094mm x 3531mm x 5296mm
Charge Box (L x W x H)	99 1/2" x 75" x 95"	2527mm x 1905mm x 2413mm
Compaction Chamber (L x W x H)	107" x 78" x 79"	2718mm x 1981mm x 2007mm
Ram Cylinder	10"	254mm
Ram Force	235,500 lbs.	1048 kN
Ram Pressure	41.9 psi	289 kPa
Output Rate	Up to 90 tph (continuous)	Up to 81.6 mtph
Output Log Size	78" W x 79" H x Variable	1981mm x 2007 x Variable
Ram Penetration	60" into trailer	1524mm into trailer
Max. System Pressure	3,000 psi	207 bar
Main Cylinder Stroke	288"	7315mm
Main Pump Flow	200 gpm (regen)	757 liters/min.
Reservoir Capacity	400 gallons	1514 liters
Oil Cooler	Air to Oil	
Main Control Panel	120 VAC	
Main Motor	100 HP	74.6kW
Main Voltage	460 VAC, 3-Phase	
Controller	Programmable Color Touch-Screen	



The BlokPak 3000 forms 10' (3m) logs of densely packed waste.



The BlokPak 3000 has a 5' (1,5m) ram penetration. This ejects the final log into the trailer with very little spillage.



The BlokPak 3000 has a compaction chamber that densely compacts the waste before it's ejected into the transfer trailer. This enables much lighter-duty, open-top trailers to be used.

Pictures and mechanical diagrams in this literature are illustrative only and may not be to scale. Specifications are subject to change without notice in order to accommodate improvements to the equipment. Certified in compliance with ANSI standard Z245.2, all applicable OSHA Regulations. Products must be used only by trained operators in accordance with the Operator Manual, as well as applicable regulations, laws, and ANSI standards.



For more information or to order, call 1-800-633-8974 or visit us at [www.marathonequipment.com](http://www.marathonequipment.com)

# TRANSFER STATIONS



## M-Series Compactors

### Overview



### M-Series Features

Marathon M-Series Compactors are built tough for the high demands of transfer stations or heavy industrial applications. These compactors can be mounted on a platform to compact directly into the transfer trailer. Compactors come standard with extended snouts to aid in clean breakaways.

Physical Characteristics	M-450X	M-600X	M-800XW	M-1050XW 9-30-75	M-1050XW 9-50-100	M-1050XW 9-50-125	M-1475XW RAWHIDE
<b>Charge Box Capacity</b>	2.91 yd <sup>3</sup> 2.22 m <sup>3</sup>	3.79 yd <sup>3</sup> 2.89 m <sup>3</sup>	5.08 yd <sup>3</sup> 3.88 m <sup>3</sup>	7.09 yd <sup>3</sup> 5.42 m <sup>3</sup>	7.09 yd <sup>3</sup> 5.42 m <sup>3</sup>	7.09 yd <sup>3</sup> 5.42 m <sup>3</sup>	10.22 yd <sup>3</sup> 7.81 m <sup>3</sup>
<b>Overall Dimensions (L x W x H)</b>	204" x 81 1/2" x 69" 5182mm x 2064mm x 1757mm	250" x 81 1/2" x 69" 6350mm x 2064mm x 1757mm	250" x 101 1/2" x 69" 6350mm x 2572mm x 1757mm	320 1/2" x 101 1/2" x 69" 8141mm x 2572mm x 1757mm	320 1/2" x 101 1/2" x 69" 8141mm x 2572mm x 1757mm	320 1/2" x 101 1/2" x 69" 8141mm x 2572mm x 1757mm	359" x 101 1/2" x 82" 9119mm x 2572mm x 2088mm
<b>Clear-Top Opening (L x W)</b>	63 1/2" x 56" 1613mm x 1422mm	83 1/2" x 56" 2121mm x 1422mm	83 1/2" x 76" 2121mm x 1930mm	117 1/2" x 76" 2985mm x 1930mm	117 1/2" x 76" 2985mm x 1930mm	117 1/2" x 76" 2985mm x 1930mm	123 1/2" x 76" 3137mm x 1930mm
<b>Weight*</b>	18,000 lbs. 8,165 kg	20,600 lbs. 9,344 kg	23,900 lbs. 10,841 kg	30,200 lbs. 13,698 kg	30,200 lbs. 13,698 kg	30,200 lbs. 13,698 kg	36,800 lbs. 16,692 kg
<b>Ram Penetration</b>	24 1/2" 622mm	30 1/2" 775mm	30 1/2" 775mm	30 1/2" 775mm	30 1/2" 775mm	30 1/2" 775mm	48" 1,219mm
<b>Snout Length</b>	16" 406mm	16" 406mm	16" 406mm	16" 406mm	16" 406mm	16" 406mm	25" 635mm
Performance Characteristics	M-450X	M-600X	M-800XW	M-1050XW 9-30-75	M-1050XW 9-50-100	M-1050XW 9-50-125	M-1475XW RAWHIDE
<b>Throughput Capacity (Per Hour)</b>	317 yd <sup>3</sup> 242 m <sup>3</sup>	317 yd <sup>3</sup> 242 m <sup>3</sup>	638 yd <sup>3</sup> 488 m <sup>3</sup>	502 yd <sup>3</sup> 384 m <sup>3</sup>	672 yd <sup>3</sup> 513 m <sup>3</sup>	1,277 yd <sup>3</sup> 976 m <sup>3</sup>	1,618 yd <sup>3</sup> 1,237 m <sup>3</sup>
<b>Cylinder Bore</b>	8" 203mm	8" 203mm	8" 203mm	9" 229mm	9" 229mm	9" 229mm	9" 229mm
<b>Motor Horsepower</b>	20	20	30	30	50	50	50
<b>Pump Flow Rate (GPM)</b>	50	50	75	75	100	125	125
<b>Cycle Time (seconds)</b>	33	43	29	51	38	20	23
<b>Max Force</b>	125,600 lbf 559 kN	125,600 lbf 559 kN	150,700 lbf 670 kN	190,800 lbf 849 kN	159,000 lbf 707 kN	190,800 lbf 849 kN	190,800 lbf 849 kN
<b>Max Hydraulic Pressure</b>	2,500 psi 172 bar	2,500 psi 172 bar	3,000 psi 207 bar	3,000 psi 207 bar	2,500 psi 172 bar	3,000 psi 207 bar	3,000 psi 207 bar

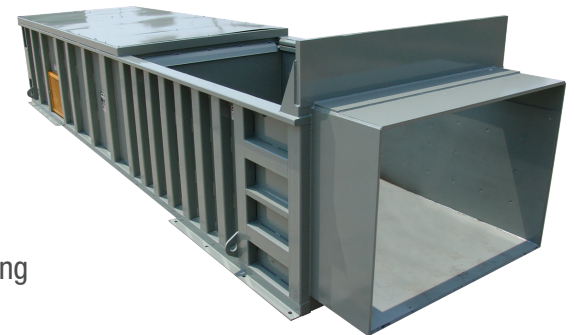
\*Weights do not include power unit. Power unit is separate (remote power unit). Specifications vary depending on the Power Unit and GPM required. Contact the factory for details.

## Rawhide Series

### Overview

### Rawhide Series Features

The Rawhide Series<sup>®</sup> features are standard on the M-Series 1475XW compactor. It has a 48" ram penetration that is especially beneficial for packing out transfer trailers for a clean breakaway.



Pictures and mechanical diagrams in this literature are illustrative only and may not be to scale. Specifications are subject to change without notice in order to accommodate improvements to the equipment. Certified in compliance with ANSI standard Z245.2 and all applicable OSHA Regulations. Products must be used only by trained operators in accordance with the Operator Manual, as well as applicable regulations, laws, and ANSI standards.



For more information or to order, call 1-800-633-8974 or visit us at [www.marathonequipment.com](http://www.marathonequipment.com)

# TRANSFER STATIONS



*This transfer station, located in Salem, VA, features two BlokPak 3000 compactors for non-stop processing as well as added redundancy. They are fed from a tipping-floor.*



*The BlokPak 3000 fits nicely into existing transfer stations with over-the-top feed systems such as this one located in Black Foot, ID.*



*The BlokPak 3000 control station features a color touch-screen interface. This installation also has an integrated weighing system that displays the accumulating weight on-screen and on overhead monitors while the waste is being processed.*



*Transfer station compactors can be configured with custom hoppers and feed systems.*



*This M-1475XW Transfer Station Compactor is fed via a tipping-floor and features the Scissor trailer connection system.*

## Optional Equipment

Marathon Transfer System Compactors can be fitted with a variety of options, such as trailer connection systems, to suit your application. The hydraulic scissor extends to connect to the trailer's vertical pin latch. The hydraulic grab claws hold the trailer, using their side pockets. Marathon also offers EZ-TRAX Conveyors for an efficient way to feed your transfer system. Load cells can be utilized to keep track of the weight as the compaction trailer is being loaded to maximize payloads.



*Extending Hydraulic Scissor Connector*



*Hydraulic Grab Claws*



*EZ-TRAX Conveyor System*



*\*Load Cell Weighing System  
Only available for BlokPak3000*

### We're Here To Help!

For detailed specifications, recommendations, or to request a site survey comparing various systems, contact the Marathon Customer Care team at: **800.633.8974**

### Authorized Dealer:



**Marathon Equipment Company | P.O. Box 1798 | Vernon, AL 35592-1798**

**Learn more about Marathon Equipment: 800.633.8974 | [www.marathonequipment.com](http://www.marathonequipment.com)**

© 2025 Marathon Equipment Company. All rights reserved.